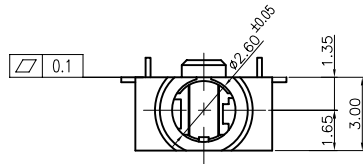
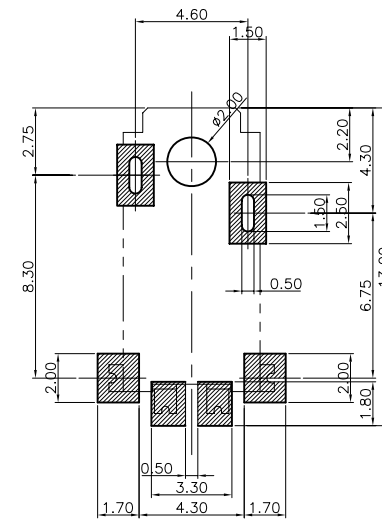
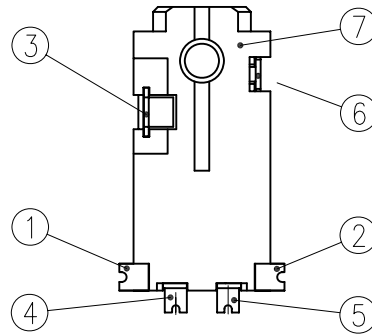
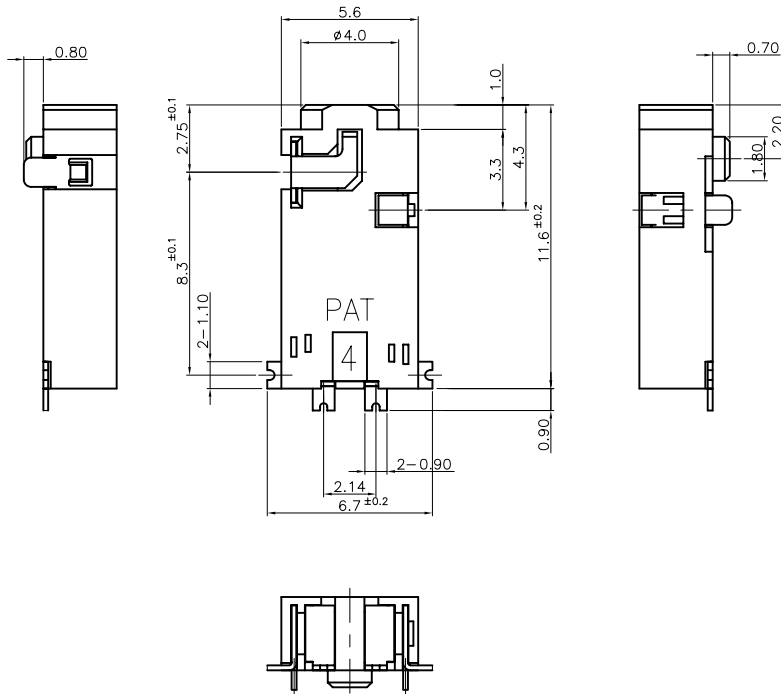


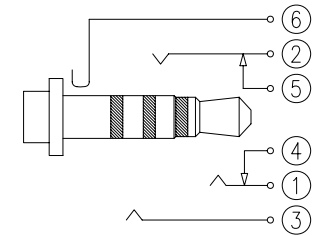
|           |      |      |       |        |       |
|-----------|------|------|-------|--------|-------|
| DRAWING   | X    | X.X  | X.XX  | X.XXX  | ANGLE |
| TOLERANCE | ±0.2 | ±0.1 | ±0.05 | ±0.005 | ±0.2° |



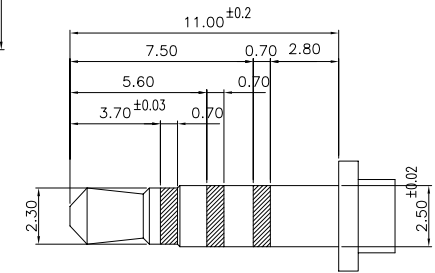
| 품번 No | 부품명 PART NAME | 수량 Q'TY | 재질 MATERIAL                       | 색상 COLOR | 처리 FINISH  | 비고 REMARK |
|-------|---------------|---------|-----------------------------------|----------|------------|-----------|
| 7     | HOUSING       | 1       | △ThermoPlastic                    | BLACK    |            | UL94V-0   |
| 6     | GROUND TER    | 1       | △P/P Bronze 0.2t                  |          | Gold Flash |           |
| 5     | SWITCH-B TER  | 1       | P/P Bronze 0.2t                   |          | Gold Flash |           |
| 4     | SWITCH-A TER  | 1       | P/P Bronze 0.2t                   |          | Gold Flash |           |
| 3     | CONTACT-C TER | 1       | Ti-Cu 0.2t                        |          | Gold Flash |           |
| 2     | CONTACT-B TER | 1       | △Be-Cu 0.2t <del>Ti-Cu 0.2t</del> |          | Gold Flash |           |
| 1     | CONTACT-A TER | 1       | Be-Cu 0.2t                        |          | Gold Flash |           |



PCB Layout (Top view)



- Circuit Diagram -



- Application of Plug -

|    |  |          |       |       |  |            |               |               |                |                      |                        |
|----|--|----------|-------|-------|--|------------|---------------|---------------|----------------|----------------------|------------------------|
| △  |  |          |       |       | 설계 DES'N BY  | 검도 CH'D BY | 승인 APPROVE BY | 작성일자 DWG DATE | 모델명 MODEL NAME | 2.50mm EARPHONE JACK |                        |
| △  | 재질변경 (Y-CUT -> C1720)<br>개선효과: 원가절감                                  | 08.03.05 | S.Y.H | L.J.Y |  |            |               | 2005.01.07    |                | 부품명 PART NAME        | ASSEMBLY               |
| △  | 재질변경 (Y-CUT -> C1720)<br>개선효과: 내구성 및 Open 개선                         | 06.05.04 | S.Y.H | M.C.H |  |            |               |               |                | 제품규격 STANDARD        | 7000-2.5G-DB1-G(NOISE) |
| △  | Blistering방지를 위해 Resin변경 (PA46->PA9T)<br>Switch 유격 방지용 Housing 덧살 추가 | 05.07.22 | 고영민   | 이재용   |  |            |               |               |                | 제품코드 ERP CODE        | PE3XX091               |
| No | 내용   | 작성일      | 작성자   | 승인    | <br><b>CTC</b> Conntction Technologies Corporation |            |               | 단위 UNITS      | mm             | 도번 DWG No            | IS102A113A             |
|    |  |          |       |       |  |            |               | 도번 DWG No     | IS102A113A     | 제품코드 ERP CODE        | PE3XX091               |